

SCHEDULE OF OPENINGS			
MARK	QTY.	SIZE	DESCRIPTION
GI	3	1/2" OD	PROCESS GAS INLET
GO-1	1	1/2" NPT	PROCESS GAS OUTLET - LOW
GO-2	1	1/2" NPT	PROCESS GAS OUTLET - MID
GO-3	1	1/2" NPT	PROCESS GAS OUTLET - HIGH
TD-1	1	1" NPT	STORAGE TANK DRAIN - LOW
TD-2	1	1" NPT	STORAGE TANK DRAIN - MID
TD-3	1	1" NPT	STORAGE TANK DRAIN - HIGH
FD	3	1/2" NPT	COALESCING FILTER DRAIN
VH	1	1" S/B0	VENT HEADER
AI	5	1/2" OD	INSTRUMENT AIR
DV	1	1/2" OD	DISPENSER VENT LINE

TOLERANCE NOTE
 UNLESS OTHERWISE NOTED:
 1) FRACTIONS ± 1"
 2) ANGLES ± 1°
 3) OVERALL AND SHIPPING DIMENSIONS ARE MAXIMUM

NOTE: IA TUBING NOT SHOWN

J-W POWER COMPANY
 FOR REFERENCE ONLY
 J-W Unit # 5505
 01/25/2010 rem1

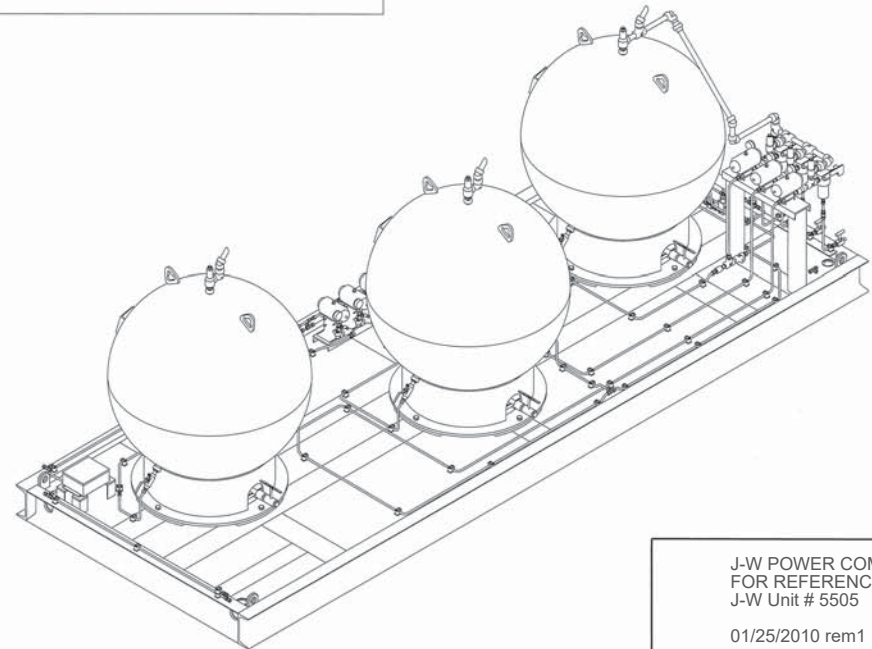
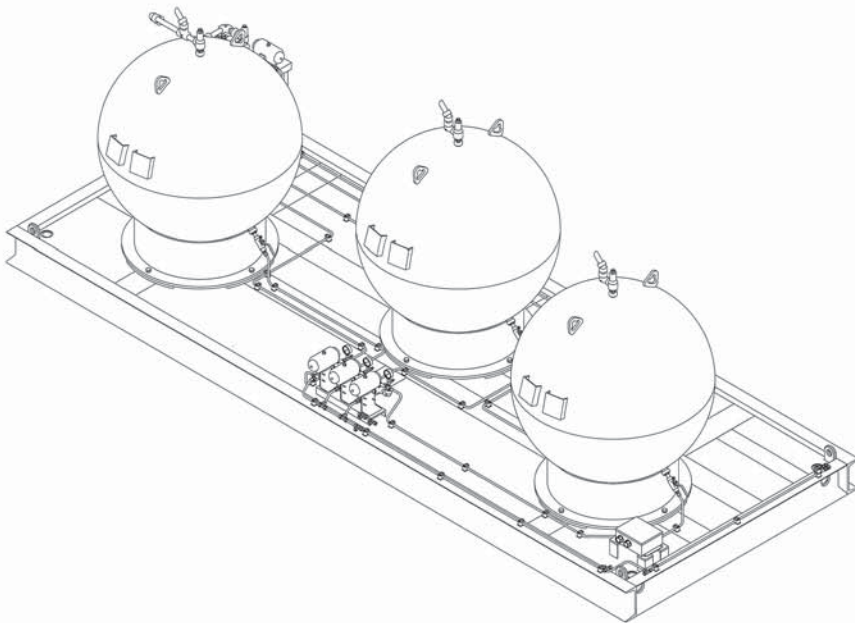
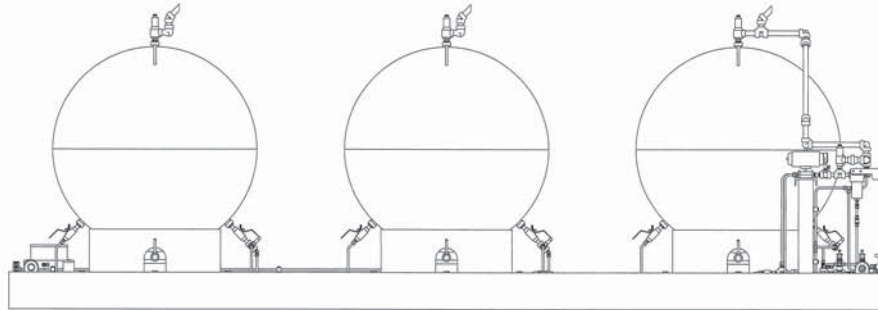


**PLAN & EL
 STORAGE CNG**

NOTICE:
 This document contains proprietary information and it shall not be used or reproduced or its contents disclosed in whole or in part without the prior written consent of J-W Operating Company.

NO.	REVISION	BY	CHK'D	APPR	DATE
2	AS BUILT, PER RED LINES	JH	MH	MH	12/11/09
1	REVISED FOR CLARITY	JH	MH	MH	12/1/09
0	ISSUE FOR CONSTRUCTION	JO	JC	MH	11/18/09

SCALE 3/4"=1'-0"



J-W POWER COMPANY
 FOR REFERENCE ONLY
 J-W Unit # 5505
 01/25/2010 rem1

NOTICE:
 This document contains proprietary information and it shall not be used or reproduced or its contents disclosed in whole or in part without the prior written consent of J-W Operating Company.



J-W POWER COMPANY
 LONGVIEW, TEXAS USA

PLAN & EL
 STORAGE CNG

NO.	REVISION	BY	CK'D	APP'D	DATE
2	AS BUILT, PER RED LINES	jo	jh	mh	12/1/09
1	REVISED FOR CLARITY	JH	MH	MH	12/1/09
0	ISSUE FOR CONSTRUCTION	JO	JC	MH	11/18/09

Seq Nbr	Component	Description				Qty Per UM
		TRIM PROCESS FLOW	STORAGE CNG		330-01438	
0	332-00985	SUPPORT INLET VALVES	CNG STORAGE		330-01438	1.00 EA
0	332-00986	SUPPORT OUTLET VALVES	CNG STORAGE		330-01438	1.00 EA
0	335-19145	TRIM PROCESS FLOW	STORAGE CNG		330-01438	1.00 EA
0	338-01331	SPOOL PRCS .50 5100#	STORAGE INLET		330-01438	1.00 EA
0	338-01336	SPOOL PRCS .50 5100#	STORAGE/OUTLET		991-01301	1.00 EA
0	338-01338	SPOOL CLSC FILTER DRAIN	STORAGE CNG		991-01301	1.00 EA
0	338-01400	SPOOL VENT/RELIEF HEADER	STORAGE CNG			1.00 EA
1	252-00985	FLTR CLSC 1.0 NPT	FIN 5000# A8586CN.3MA			3.00 EA
2	330-01416	TANK 48 ID 5500# SPHERE	1-6000#NPT x 1-6000#NPT			3.00 EA
3	581-00374	GA PRESS 0- 10000 PSI	2.5 WIKA 233.53 .25 LF			6.00 EA
4	626-00752	RGLTR BACK PRESS .50	6000# MODEL 635			2.00 EA
5	635-00269	VA NDL .50 MxF	6000# @200F			6.00 EA
6	635-00830	VA NDL .25 MxF	6000# @400F CS V.PKG MTL SEAT*			6.00 EA
7	635-00944	VA NDL 1 FNPT 10000#	@ 150F WOG .562 ORF			3.00 EA
8	635-02220	VA BALL .50 5500# FNPT	W/ACTR NUTTRON/BETTIS *			6.00 EA
9	640-00661	VA CHK .50 MNPT 6000#	SWGK SS-CHM8-1			8.00 EA
10	640-00657	VA CHK .50 6000# 1#SP	SWGK SS-CHS8-1			3.00 EA
11	640-00664	VA BALL .50 6000#	SWGK SS-83KS8			4.00 EA
12	635-02353	VA RLF 1.00 5500# 350F	MERCER 91-M7C61P5641			3.00 EA
13	635-02354	VA RLF .50 5000# 350F	MERCER 91-M6C61P5641			3.00 EA
14	712-00329	XDCR PRESS 0-6000 PSIG	4.0-20mA OUT 9-30 VDC IN			4.00 EA
15	635-01466	VA BALL .50 6000#	@350F NUTTRON T3-F05S60B			6.00 EA

NOTES:

1. ALL TUBING IS 316SS SEAMLESS UNLESS OTHERWISE NOTED.
2. ALL NPT CONNECTIONS ARE TO BE PLUGGED.
3. ALL PROCESS PIPING COMPONENTS ARE RATED FOR 350°F UNLESS OTHERWISE NOTED.
4. SEE DRAWING #335-17114 FOR LEGEND OF SYMBOLS & ABBREVIATIONS.
5. NO - NORMALLY OPEN DURING UNIT OPERATION.
NC - NORMALLY CLOSED DURING UNIT OPERATION.

PIPE & TUBING SCHEDULE

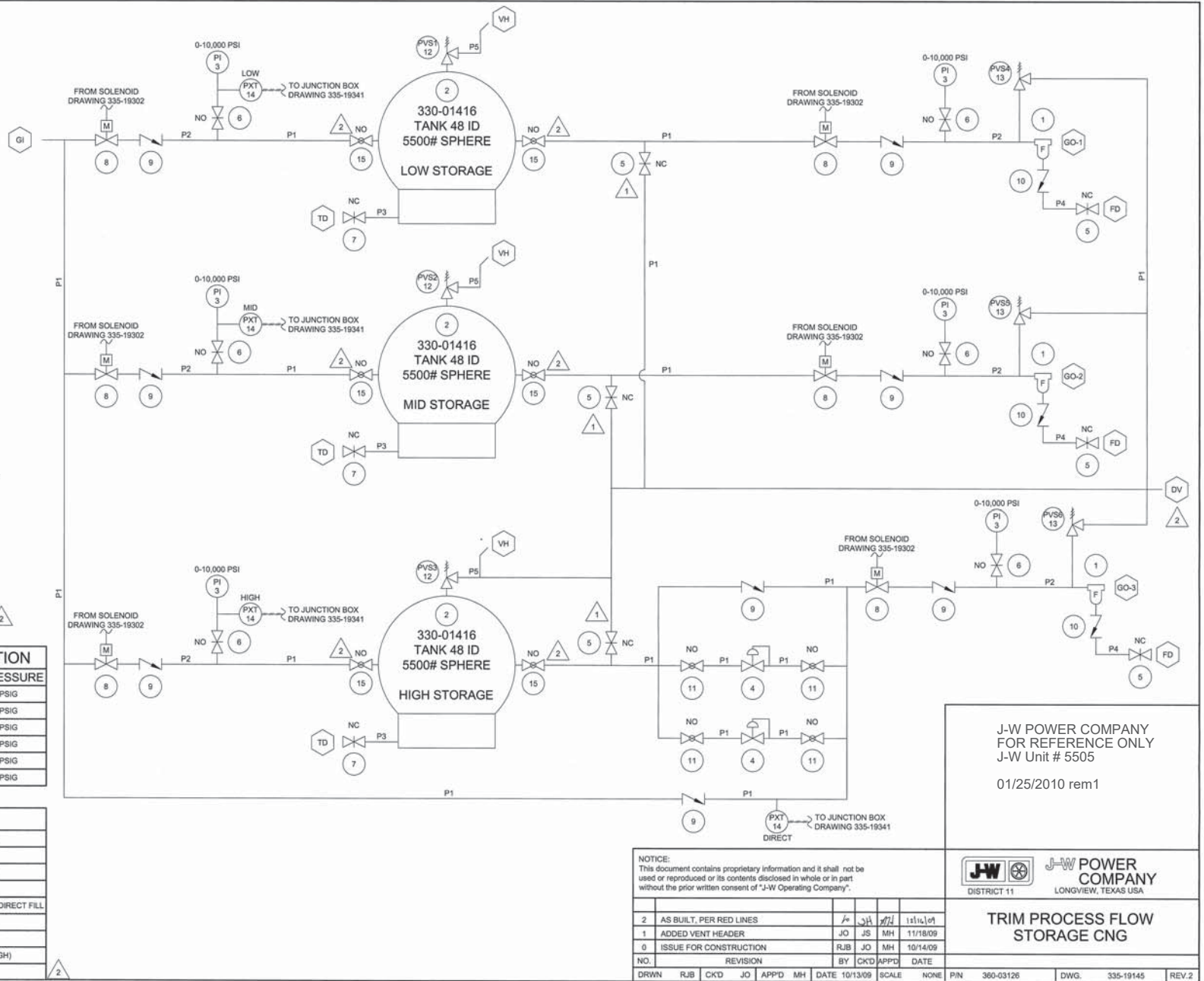
MARK	SPOOL	SIZE	MAT'L	MAWP
P1	PROCESS	.50" OD X .083	316SS SMLS TBG	5500# @ 350°F
P2	PROCESS	.50" XXH	SA-106-B	5500# @ 350°F
P3	TD	1.0" XXH	SA-106-B	5500# @ 350°F
P4	FD	.50" OD X .083	316SS SMLS TBG	5000# @ 350°F
P5	VH	1" XH	SA-106-B	--

PRESSURE RELIEF VALVE IDENTIFICATION

ITEM	J-W PART NO	DESCRIPTION	SET PRESSURE
PSV1	635-02353	MERCER 91-M7C61P5641	5500 PSIG
PSV2	635-02353	MERCER 91-M7C61P5641	5500 PSIG
PSV3	635-02353	MERCER 91-M7C61P5641	5500 PSIG
PSV4	635-02354	MERCER 91-M6C61P5641	5000 PSIG
PSV5	635-02354	MERCER 91-M6C61P5641	5000 PSIG
PSV6	635-02354	MERCER 91-M6C61P5641	5000 PSIG

SCHEDULE OF OPENINGS

MARK	QTY	SIZE	DESCRIPTION
GI	1	1/2" O.D.	GAS INLET
GO-1	1	1/2" NPT	GAS OUTLET - LOW DISPENSER
GO-2	1	1/2" NPT	GAS OUTLET - MID DISPENSER
GO-3	1	1/2" NPT	GAS OUTLET - HIGH DISPENSER/DIRECT FILL
FD	3	1/2" NPT	FILTER DRAIN
TD	3	1" NPT	TANK DRAIN
VH	3	1" S/80	RELIEF VALVE VENT HEADER (HIGH)
DV	1	1/2" OD	DISPENSER VENT LINE



J-W POWER COMPANY
FOR REFERENCE ONLY
J-W Unit # 5505
01/25/2010 rem1

NOTICE:
This document contains proprietary information and it shall not be used or reproduced or its contents disclosed in whole or in part without the prior written consent of "J-W Operating Company".

NO.	REVISION	BY	CHKD	APPD	DATE
2	AS BUILT, PER RED LINES	JW	JS	MH	11/11/09
1	ADDED VENT HEADER	JO	JS	MH	11/18/09
0	ISSUE FOR CONSTRUCTION	RJB	JO	MH	10/14/09

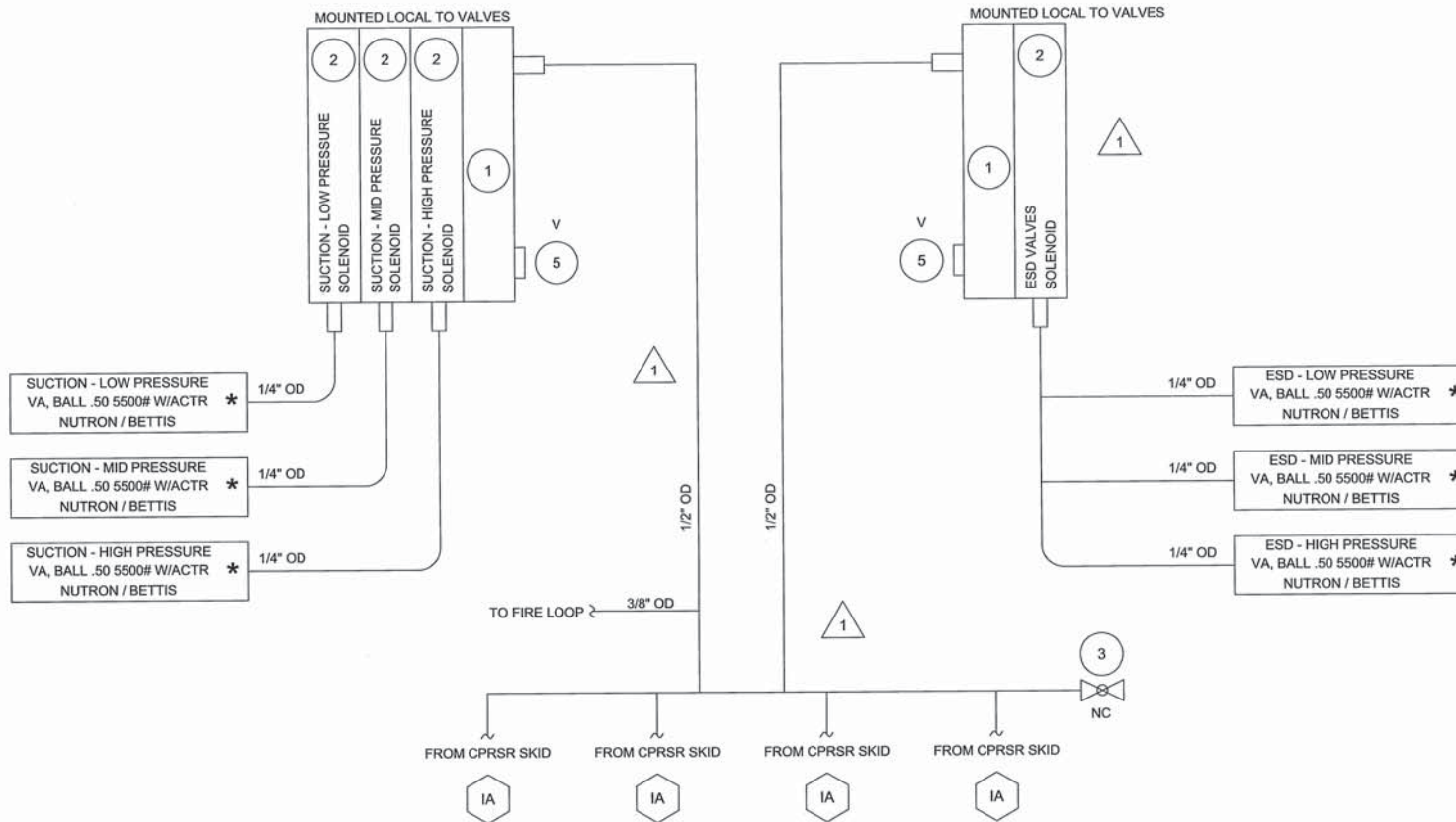
DRWN RJB CKD JO APPD MH DATE 10/13/09 SCALE NONE PIN 360-03126 DWG. 335-19145 REV.2



TRIM PROCESS FLOW STORAGE CNG

SCHEM AIR SYSTEM CNG STORAGE SKID 991-01301/2

Seq Nbr	Component	Description	-----	Qty Per UM
0	335-19302	SCHEM AIR SYSTEM	CNG STORAGE SKID 991-01301/2	1.00 EA
1	635-01361	KIT END PLATE MAC PN	A2-5003-01 F/635-01360	2.00 EA
2	635-01879	VA SOL 3WAY .25 FNPT	289B-110EA NC ONLY	* 3.00 EA
2	635-01879	VA SOL 3WAY .25 FNPT	289B-110EA NC ONLY	* 1.00 EA
3	635-01452	VA BALL .50 2000# FNPT	CS 2PC FP LCK SS TRIM	* 1.00 EA
5	733-30150	VENT SCREEN .12"NPT BRZ	CLIPPARD 15080	2.00 EA



ALL TUBING TO MEET THESE MINIMUM REQUIREMENTS.

- 1/4" - .25" x .035 316SS SML TBG
- 3/8" - .38" x .065 316SS SML TBG
- 1/2" - .50" x .083 316SS SML TBG
- 5/8" - .63" x .065 316SS SML TBG
- 3/4" - .75" x .065 316SS SML TBG
- 7/8" - .88" x .065 316SS SML TBG
- 1" - 1.00" x .120 316SS SML TBG

NOTES:

1. SEE DRAWING #335-17114 FOR LEGEND OF SYMBOLS & ABBREVIATIONS.
2. NO - NORMALLY OPEN DURING UNIT OPERATION.
NC - NORMALLY CLOSED DURING UNIT OPERATION.

★ SEE DWG # 335-19145 FOR B.O.M.

NOTICE:

This document contains proprietary information and it shall not be used or reproduced or its contents disclosed in whole or in part without the prior written consent of "J-W Operating Company".

J-W POWER COMPANY
FOR REFERENCE ONLY
J-W Unit # 5505

01/25/2010 rem1



DISTRICT 11



LONGVIEW, TEXAS USA

SCHEDULE OF OPENINGS

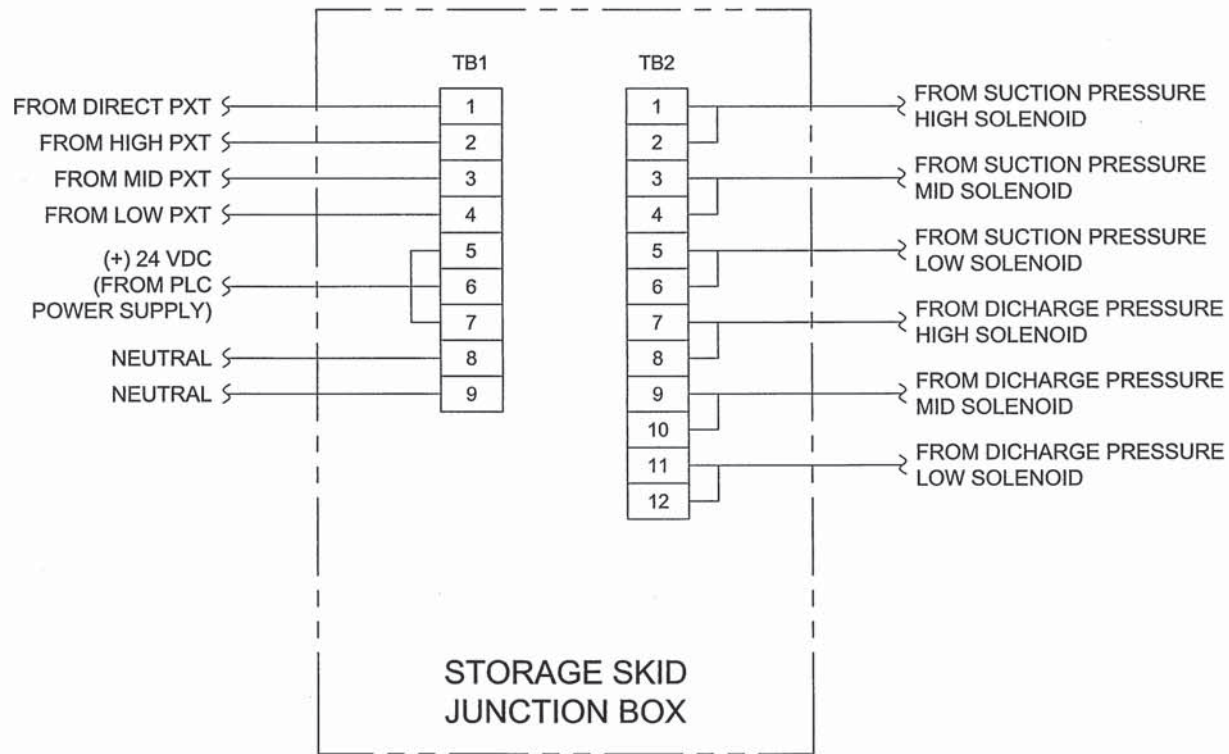
MARK	QTY	SIZE	DESCRIPTION
IA	4	1/2" OD	INSTRUMENT AIR SUPPLY

NO.	REVISION	BY	CK'D	APP'D	DATE
1	AS BUILT, PER RED LINES	J	JH	MH	10/14/09
0	ISSUE FOR CONSTRUCTION	RJB	RJB	MH	10/14/09

SCHEM AIR SYSTEM CNG STORAGE SKID

330-01438

DRWN	RJB	CK'D	RJB	APP'D	MH	DATE	10/05/09	SCALE	NONE	P/N	360-03154	DWG.	335-19302	REV.	1
------	-----	------	-----	-------	----	------	----------	-------	------	-----	-----------	------	-----------	------	---



SEE DRAWING # 335-19145 FOR TB-1
 SEE DRAWING # 335-19302 FOR TB-2

J-W POWER COMPANY
 FOR REFERENCE ONLY
 J-W Unit # 5505

01/25/2010 rem1

0	ISSUE FOR CONSTRUCTION	RJB	10/13/09	M/A	10/14/09
NO.	REVISION	BY	CK'D	APP'D	DATE
DRWN	RJB	CK'D	10/13/09	APP'D	M/A
DATE	10/13/09	SCALE	NONE	P/N	



JW POWER COMPANY
 DISTRICT 11 LONGVIEW, TEXAS USA

**SCHEM ELEC SYSTEM CNG
 STORAGE TANK**

NOTICE:
 This document contains proprietary information and it shall not be used or reproduced or its contents disclosed in whole or in part without the prior written consent of "J-W Operating Company".

DWG. 335-19341 REV. 0